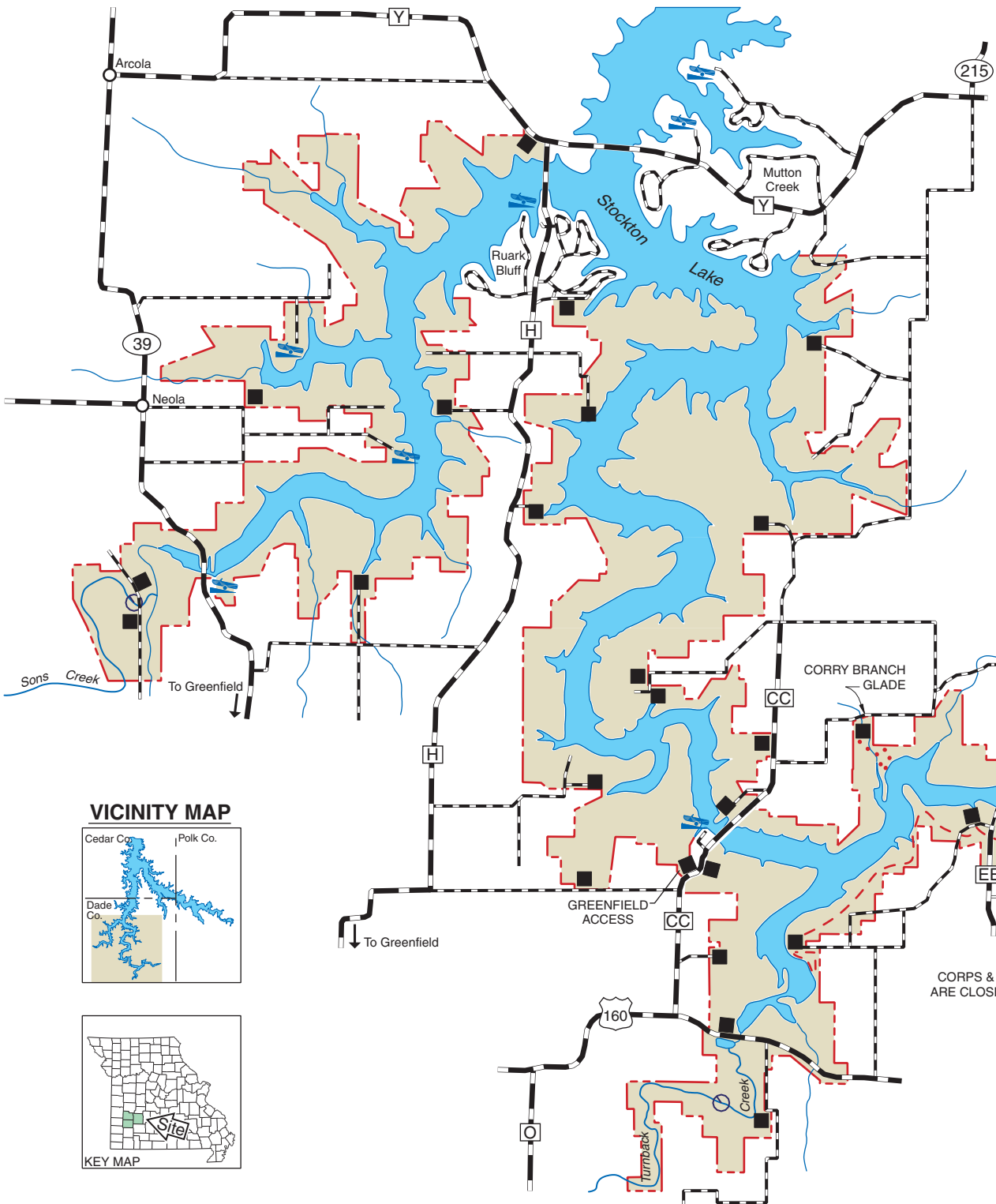


# STOCKTON LAKE BIG SAC ARM

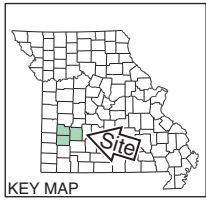
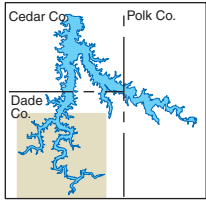
MAP 1 OF 2



### LEGEND

- Boundary
- Paved Road
- Gravel Road
- Hiking Trail
- Multi-Use Trail
- Parking Lot
- Boat Ramp
- Wildlife Management Area
- Unit Boundary
- Lake Boundary

### VICINITY MAP

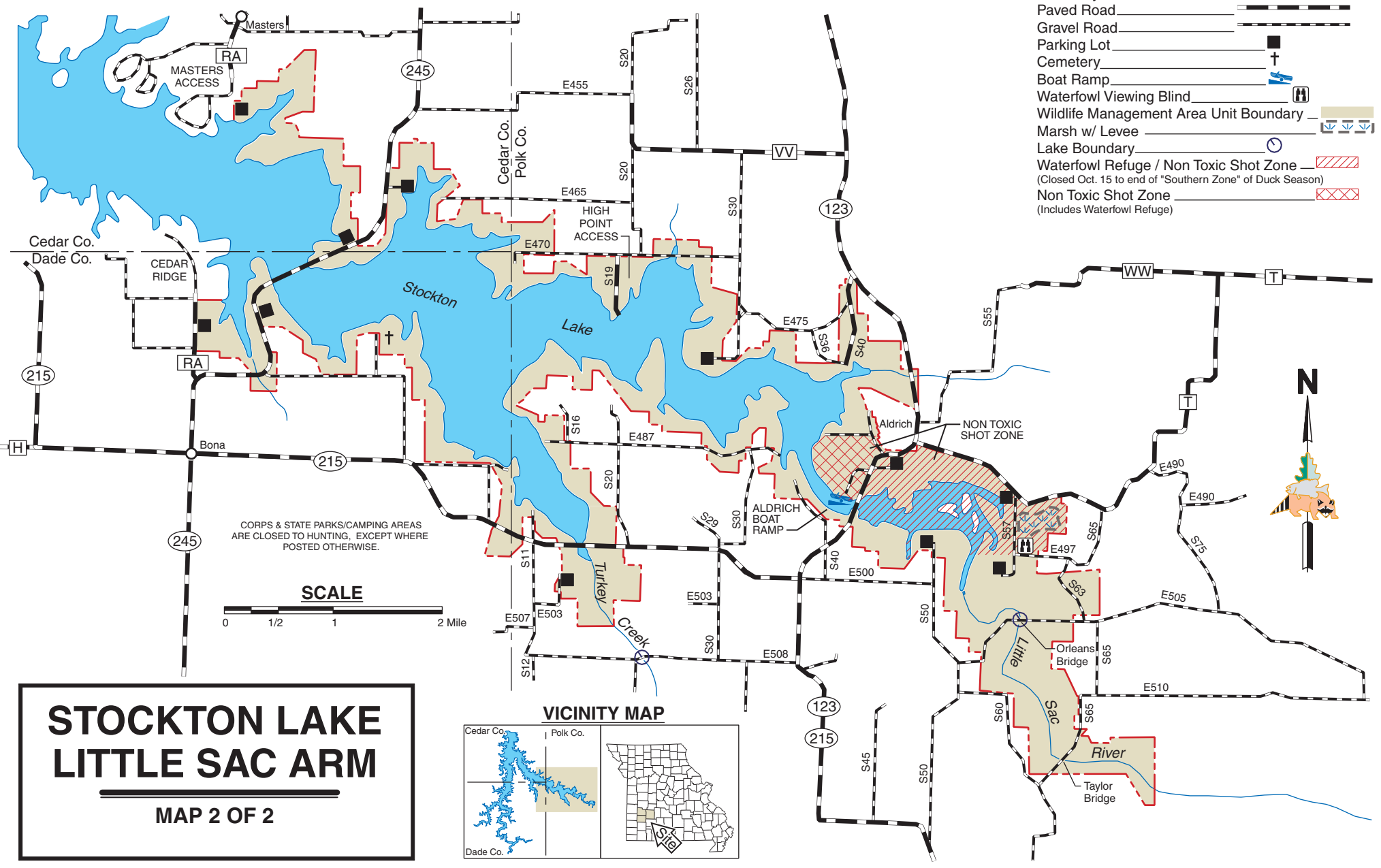


CORPS & STATE PARKS/CAMPING AREAS ARE CLOSED TO HUNTING EXCEPT WHERE POSTED OTHERWISE.



### LEGEND

- Boundary
- Paved Road
- Gravel Road
- Parking Lot
- Cemetery
- Boat Ramp
- Waterfowl Viewing Blind
- Wildlife Management Area Unit Boundary
- Marsh w/ Levee
- Lake Boundary
- Waterfowl Refuge / Non Toxic Shot Zone   
(Closed Oct. 15 to end of "Southern Zone" of Duck Season)
- Non Toxic Shot Zone   
(Includes Waterfowl Refuge)

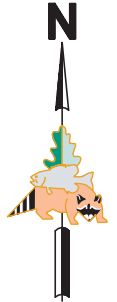
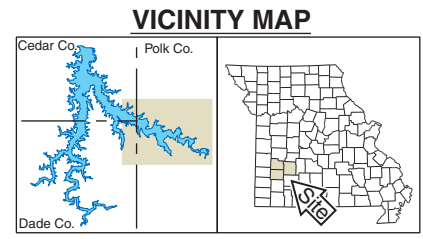


CORPS & STATE PARKS/CAMPING AREAS ARE CLOSED TO HUNTING, EXCEPT WHERE POSTED OTHERWISE.

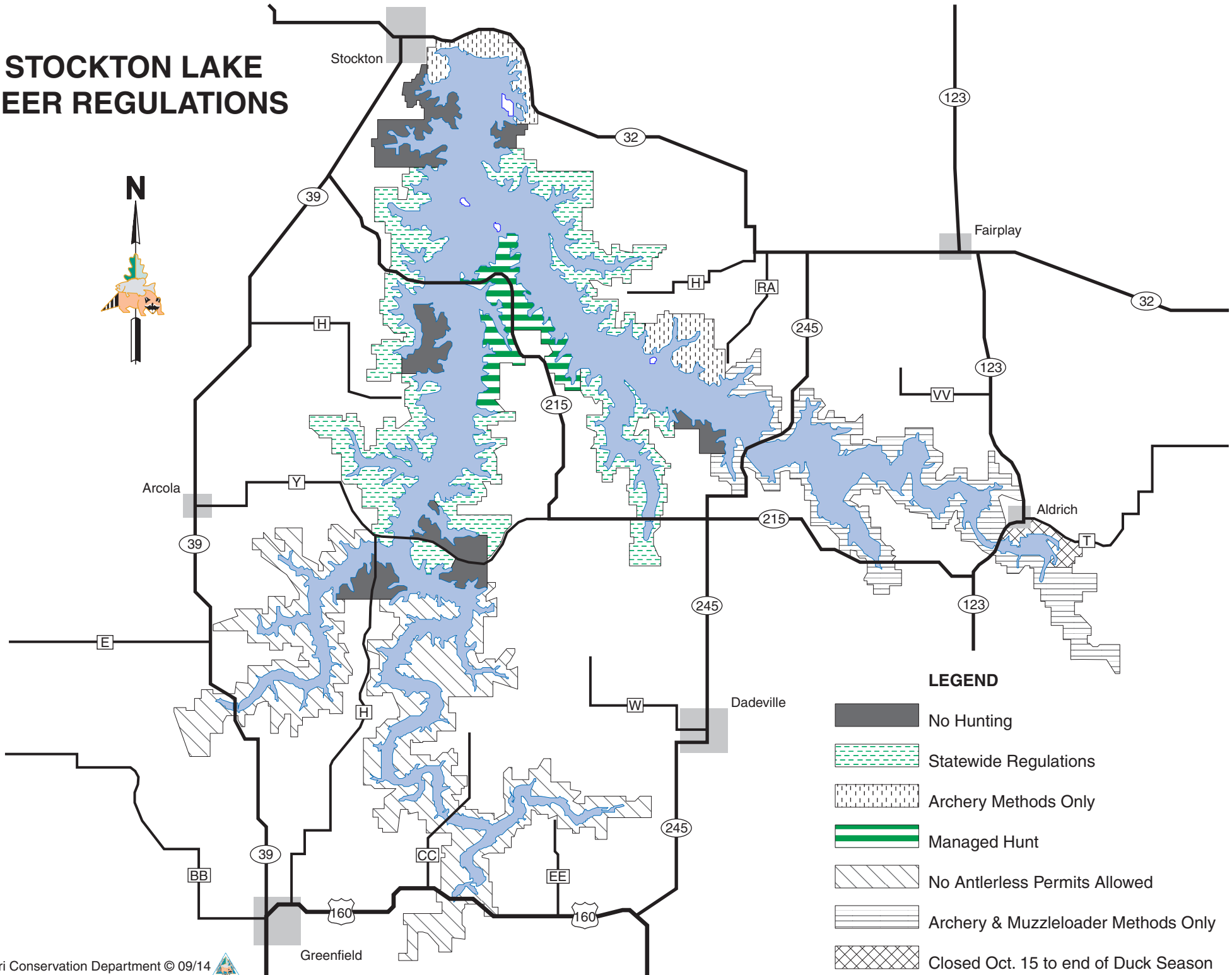
**SCALE**  
0 1/2 1 2 Mile

# STOCKTON LAKE LITTLE SAC ARM

MAP 2 OF 2



# STOCKTON LAKE DEER REGULATIONS



## LEGEND

-  No Hunting
-  Statewide Regulations
-  Archery Methods Only
-  Managed Hunt
-  No Antlerless Permits Allowed
-  Archery & Muzzleloader Methods Only
-  Closed Oct. 15 to end of Duck Season